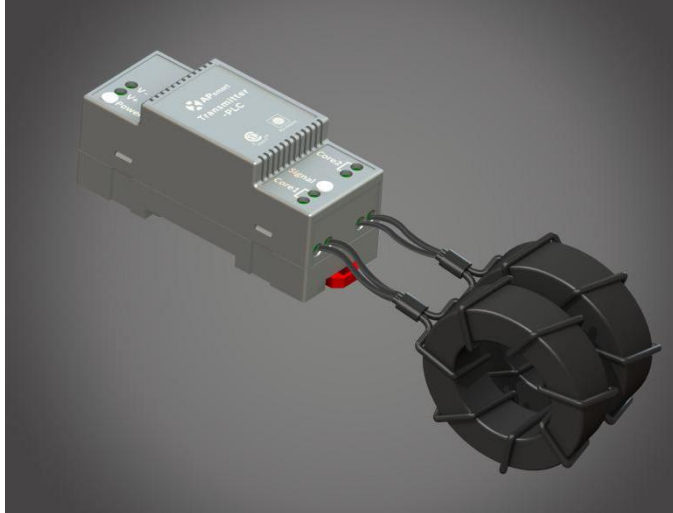


## Raising the bar in innovative DC MLPE solar power systems



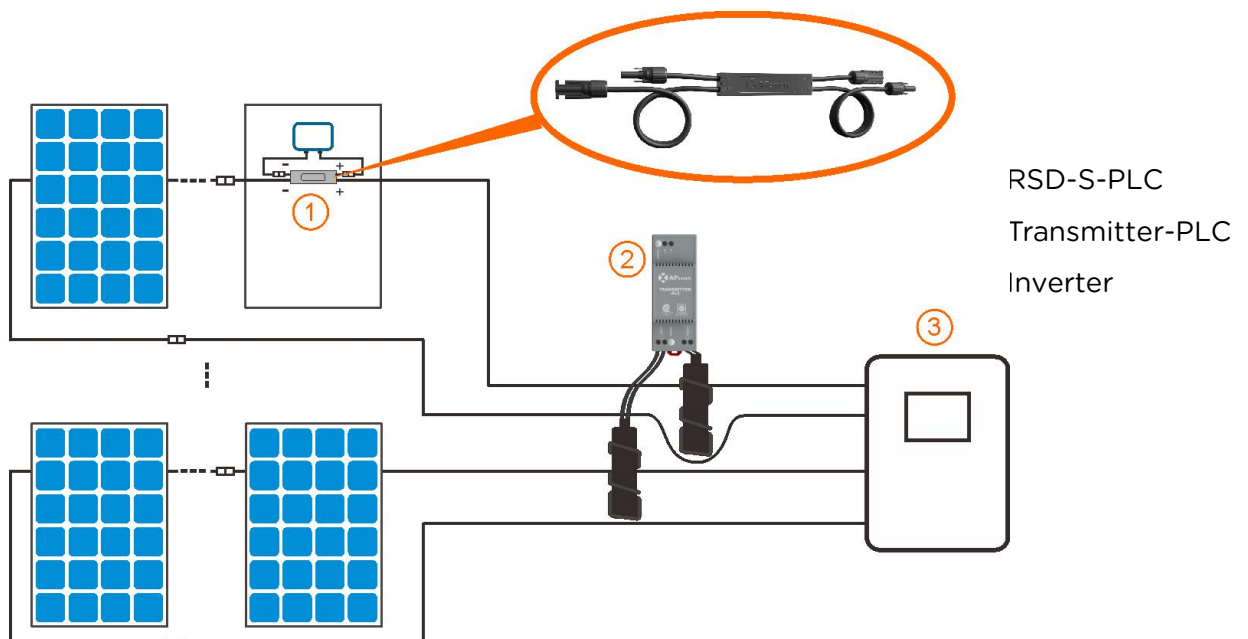
### TRANSMITTER-PLC

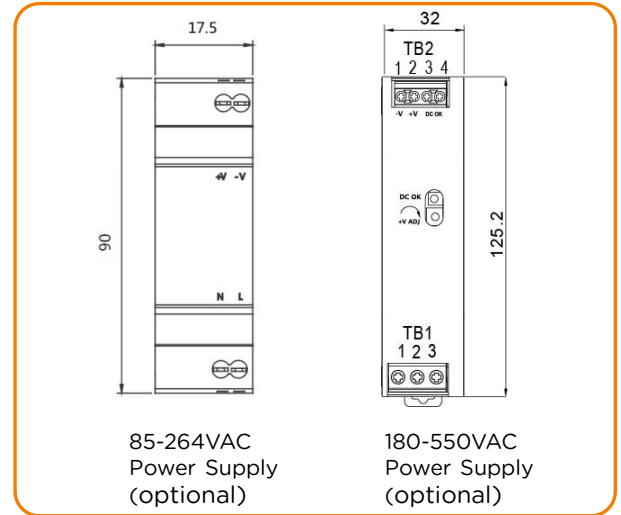
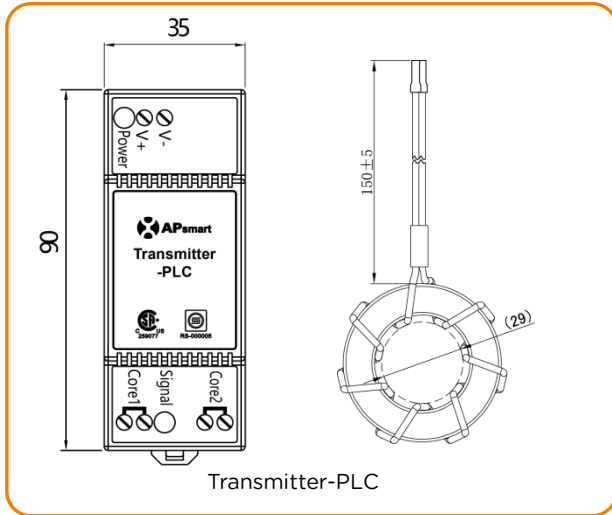
- Meets NEC 2017 (690.12) requirements
- Switch off Transmitter-PLC, rapid shutdown the output of PV modules
- Meets SunSpec requirements
- Equipped with single/dual core
- Optional 85-264VAC power supply
- Optional 180-550VAC power supply

The APsmart Rapid Shutdown System Transmitter-PLC is part of a rapid shutdown solution when paired with APsmart RSD-S-PLC, a PV module rapid shutdown unit. While powered on, the Transmitter-PLC sends a signal to the RSD-S-PLC units to keep their PV modules connected and supplying energy.

RSD-S-PLC units automatically enter rapid shutdown mode when the Transmitter-PLC is switched off and resume energy production when power is restored to the Transmitter-PLC. This solution complies with NEC 690.12 specifications for 2017 and supports the SunSpec signaling for rapid shutdown.

The Transmitter-PLC includes one or two cores and an optional power supply: 85-264VAC for residential, 180-550VAC for commercial.





### Main electrical data

Input Voltage	12 VDC
Input Current	0.5A
Communication	PLC

### Power Supply

Residential ( optional )	85-264VAC Input, 12VDC Output, 90 mm x 17.5 mm x 58.4 mm
Commercial ( optional )	180-550VAC Input, 12VDC Output, 125.2 mm x 32 mm x 102 mm

### Core data

Max. Current	300A ( 150AX2 )
Max. System Voltage	1500VDC
Inner Diameter	29mm
Max. Supported PV Modules per String	30 modules

### Max.Number Of Strings Per Core

DC Cable Diameter	Φ5.9mm	Φ6.35mm	Φ7mm	Φ8.6mm
Number Of Strings Per Core(without connector)	≤15	≤15	≤14	≤10

### Environmental

Temperature	-40°C ~ +85°C
-------------	---------------

### Structure data

Dimensions (W x H x D)	90 mm x 35 mm x 40 mm
Enclosure Environmental Rating	IP30

### Features & Compliance

Safety Compliance	NEC 2017 (690.12); UL1741; CSA C22.2 No. 330-17
EMC Compliance	FCC Part15; ICES-003

## ORDERING INFORMATION

406001	Single Core Transmitter-PLC (no power supply)
406000	Dual Core Transmitter-PLC (no power supply)



19925 Stevens Creek Blvd, Suite 100, Cupertino, CA 95014  
+1 737-218-8486 | [info@APsmartGlobal.com](mailto:info@APsmartGlobal.com) | [APsmartGlobal.com](http://APsmartGlobal.com)

