



Transmitter-PLC Outdoor Kit Quick Installation Guide

Rev1.9 2021/10/13



This installation guide is for customers who have purchased Transmitter-PLC-Outdoor Kit. If you have not purchased our outdoor kit, the following content is used as a reference.

Transmitter-PLC Installation

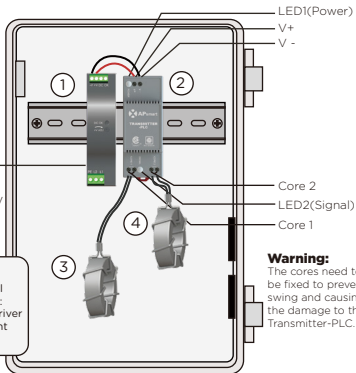
- ① Power Supply
- ② Transmitter-PLC
- ③ Core 1
- ④ Core 2

180/550VAC
Power Supply

Optional Power Supply
120/240VAC
480/277VAC

Note:

Transmitter-PLC terminal installation requirements:
1. A 3mm slotted screwdriver
2. The torque requirement standard: 0.2-0.4N•m



Warning:

The cores need to be fixed to prevent swing and causing the damage to the Transmitter-PLC.

Note: If there is only one core needed, connect using Core 1 terminal.

Power supply must be on same AC branch circuit as inverter to meet rapid shutdown requirements.

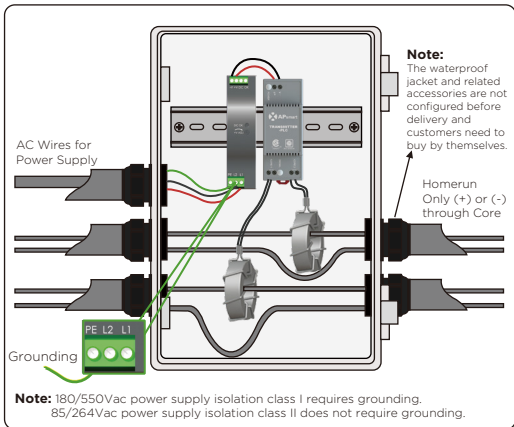
During operation, the Power LED should be lit and the Signal LED should be blinking. When Transmitter fails to work, the signal LED will not be blinking. If the Power LED is also not lit, check the power supply first.

Note: Install RSD before powering on the Transmitter.

- **Mount Transmitter-PLC and power supply on DIN rail**
- **Connect DC leads from power supply to transmitter-PLC**
- **Connect dual core (Core 1 and Core 2) to transmitter-PLC**

Place rapid shutdown system label no more than 1m (3ft) from Transmitter or AC disconnect if not at same location.

Transmitter-PLC Wiring



Note: Install RSD before powering on Transmitter.

- **Pass either positive or negative cables through cores**

(either both positive cables or both negative cables. Do not use one positive and one negative cable.)

- **Connect wires to AC side of Power supply**

Max.Number of Strings Per Core :

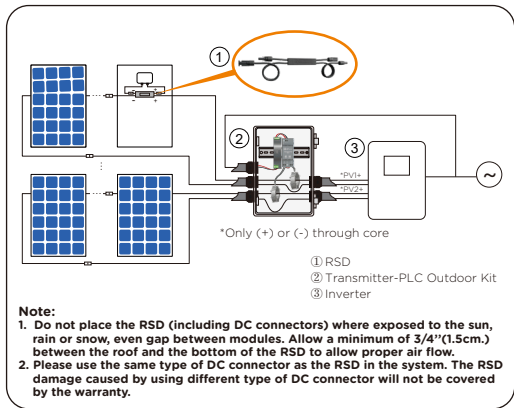
| DC Cable Diameter(without connector) | Φ5.9mm | Φ6.35mm | Φ7mm | Φ8.6mm |
|--------------------------------------|--------|---------|------|--------|
| 29mm Core | <15 | <15 | <14 | <10 |
| 11mm Core | <6 | <5 | <4 | <2 |

Max String Length: **30 modules**

Max Current Per Core: **150A**

Max Cable Length From Inverter (+) to Inverter (-): **1000ft (300m)**

System Wiring Diagram



Troubleshooting

Check that the system conforms to the design rules:

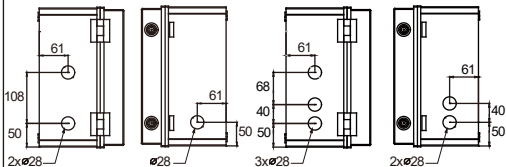
- Up to 30 modules per string
- String length up to 1000ft (total cable length from + to -)
- DC cables through Core must be the same polarity(all positive or all negative)
- Power LED should be lit and Signal LED should be blinking during operation
- Verify that Core wiring is correct
- Power cycle Transmitter-PLC if Signal LED is unlit

Outdoor Kit Drilling Guide

Drilling Guide for .75" Conduit

Single Core

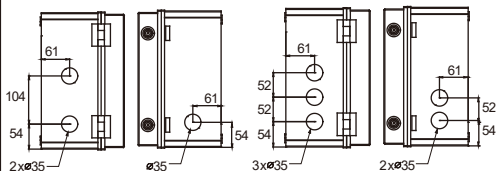
Dual Core



Drilling Guide for 1" Conduit

Single Core

Dual Core



Note: The Outdoor Kit was not punched before delivery and customer need to make it themselves according to the actual situation. The figure is only for reference.



4301515341

600 Ericksen Ave NE, Suite 200 Seattle, WA 98110

TEL: +1-737-218-8486/+1-866-374-8538

EMAIL: support@APsmartGlobal.com

APsmartGlobal.com

Product information is subject to change without notice.